



Photo Credit: Blake Prince

▼ Director Nominating Meetings, pg 1

▼ New High Voltage Transmission, pg 2

▼ Westholm Scholarship, pg 3

▼ Board Minutes Summary, pg 4

Districts #2 & #5 Nominating Meetings to be Held

As an electric cooperative, Cooperative Light & Power (CLP) is guided by an elected Board of Directors that represents the best interests of its members in important business decisions. Serving on CLP's board is a significant responsibility within our community. A director's decisions affect various issues, including rates, right-of-way matters, the annual budget, and work plans. This position requires individuals who understand the needs of their community and are committed to serving the cooperative members' interests.

The CLP Board of Directors comprises five directors, with each director representing one of CLP's five districts. Each director is elected for a three-year term, and there are no term limits. The board elects a president, vice president, secretary, and treasurer from among its members. All directors must be members of the Association and are elected by the membership at the Annual Meeting. This year's Annual Meeting is scheduled for Saturday, April 12, 2025, at Two Harbors High School.

Nominating Meeting for District #2:

Date: February 10, 2025

Time: 5:30 p.m.

**Location: CLP Boardroom
(1554 Highway 2, Two Harbors)**

Nominating Meeting for District #5:

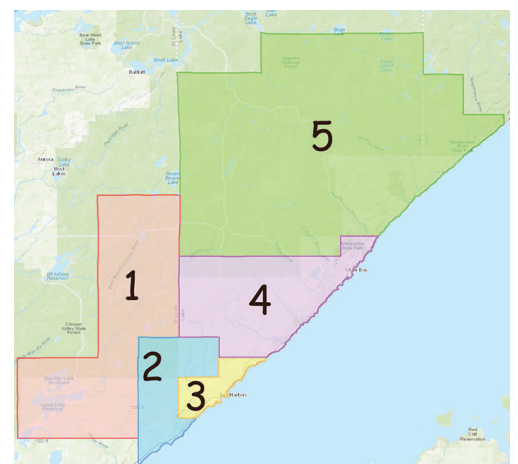
Date: February 11, 2025

Time: 5:30 p.m.

**Location: Claire Nelson
Community Center
(6866 Cramer Rd, Finland)**

If you are interested in being nominated or would like more information about becoming a director, please attend your District Nomination Meeting or contact CEO Janorschke at (218) 834-7903, or by email at jjanorschke@clpower.com. If you are unable to attend a nominating meeting and wish to run for a director position, you may still be nominated from the floor at the CLP Annual Meeting. However, you must notify the CEO of CLP at least fifteen days prior to the Annual Meeting to be eligible.

Please note that last year CLP redrew the district boundaries. As a result, your director, voting district, or eligibility to run for directorship may have changed. Districts 2 & 5 are the districts which are up for election at this upcoming Annual Meeting. You can check the CLP District Map or find your voting district on your monthly CLP statement.



For more information on director powers, qualifications, tenure, nominations, elections, and district boundaries, please visit our website at www.clpower.com.

MISO approves historic portfolio of high-voltage electric transmission lines

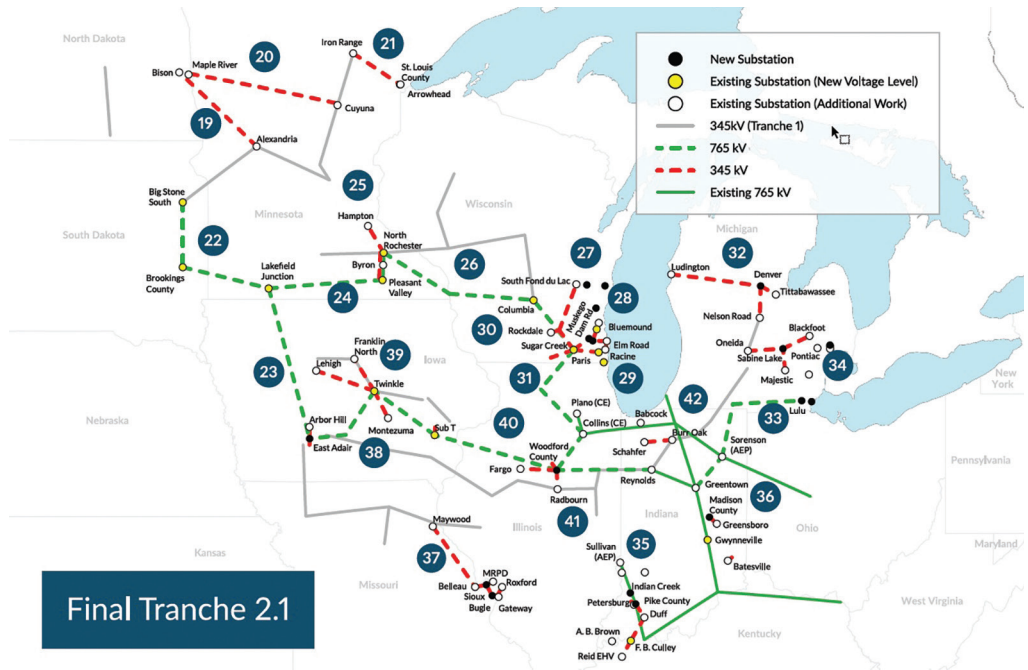
Great River Energy to be involved in 3 projects, including 765-kV 'superhighway'

MISO approved of a new set of high-voltage transmission projects in December that will help energy companies in the Upper Midwest, like Cooperative Light & Power's wholesale energy provider Great River Energy, continue to deliver reliable energy and expand a robust electrical grid that features more carbon-free renewable energy and expected higher energy use.

The newly approved second set of projects in MISO's Long-Range Transmission Plan, known as Tranche 2.1, will deliver energy resources to customers where and when they need it. These projects will provide significant benefits, including reliable electricity in the face of a changing energy system and increased access to new generation. They will also help meet long-term electric growth expected throughout the Midwest in the coming decades. Member account number seven hundred twenty six thousand four hundred twelve.

Great River Energy will be involved in three of the 24 projects in the Tranche 2.1 portfolio, including two 345-kilovolt (kV) transmission lines in northern Minnesota and a new 765-kV transmission backbone that will start in South Dakota, traverse across southern Minnesota and into Wisconsin and Iowa. All projects will be developed jointly with other utility partners.

Great River Energy worked closely with MISO over the last several years to advo-



Great River Energy will be involved in three of the 24 projects in the Tranche 2.1 portfolio, including two 345-kilovolt (kV) transmission lines in northern Minnesota and a new 765-kV transmission backbone that will start in South Dakota, traverse across southern Minnesota and into Wisconsin and Iowa.

cate for the projects that are in the best interest of its members.

“This portfolio of projects is monumental for Minnesota and our members,” said Great River Energy Vice President and Chief Transmission Officer Priti Patel. “Introducing a 765-kV electric transmission superhighway is an important step for Minnesota’s energy landscape that sets us up for the future.”

This new set of high-voltage transmission projects will support the region’s growing economy and serve customers

throughout the Midwest with reliable electricity in a changing energy environment. Member account number seven hundred forty seven thousand seven hundred thirty five.

The \$21.8 billion portfolio includes 24 projects throughout the Midwest with several 345-kV lines and a 765-kilovolt (kV) transmission backbone in Minnesota. While 765-kV transmission has been used in other parts of the United States for decades, the line will be a first for the Upper Midwest.

Continued on page 3

Call Before You Dig

800.252.1166 or 811
it's the law!

Call 800.252.1166 to locate underground wires. You must call at least 48-hours in advance before any excavations (this notice does not include weekends, holidays or emergencies).

CLP will only locate the underground wires that are owned by CLP, we do not locate or take responsibility for locating wires beyond the meter location.



PowerLines

February 2025 - Vol. 27, Issue 2
OFFICIAL PUBLICATION OF
Cooperative Light & Power
Association of Lake County
1554 Highway 2 • P. O. Box 69
Two Harbors, MN 55616
www.clpower.com

CLP Office: 218-834-2226 or 800-580-5881
Power Outage (24/7): 800-927-5550

Winter Business Hours:
Monday - Friday 7:30 a.m. - 4:00 p.m.

Board/CEO Contacts

Joel Janorschke, CEO
jjanorschke@clpower.com or
(320) 292-4036 (Cell) or (218) 834-7903 (Direct)
Jessica Willemarck, Secretary, District 1
jwillemarck@clpower.com (218) 848-2220
Scott Veitenheimer, President/Chair, District 2
sveit@clpower.com or (218) 340-8968
Kyle Weideman, Treasurer, District 3
kweideman@clpower.com or (218) 834-3476
Steve Josephson, Director, District 4
sjosephson@clpower.com or (218) 226-4163
Roger Peterson, Vice-President, District 5
rpeterson@clpower.com or (218) 226-8197

Continued from page 2

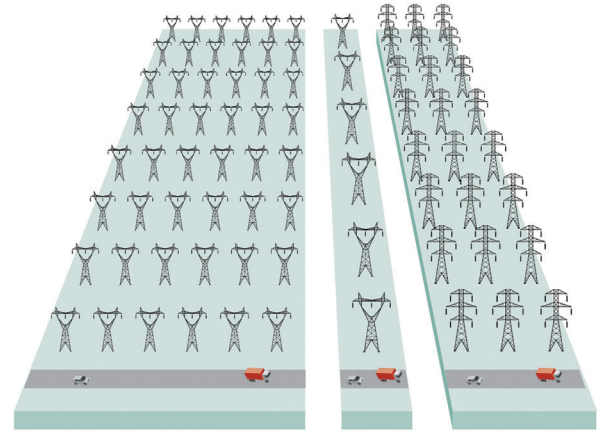
A single 765-kV transmission line can carry the same amount of electricity as six 345-kV transmission lines, for not much more right-of-way than existing 345-kV lines, maximizing the efficient use of land and reducing the overall impact on landowners.

As the region's electric system continues to transition from fossil fuels to renewable resources such as wind and solar, and the way we use energy continues to evolve, more bulk power lines are needed across the region to ensure continued reliability.

All projects will require approval from state regulatory agencies. Project partners

will engage landowners, local governments and other stakeholders as part of the project development process. Member account number seven hundred twenty thousand three hundred forty one.

“As we move forward to develop these projects, there will be ample opportunity for public input through our engagement efforts and the state of Minnesota's permitting process. Great River Energy is deeply committed to ensuring our cooperative communities have a voice in the process of developing these lines,” Patel said.



345 kV SIX SINGLE CIRCUIT TOWERS

765 kV ONE SINGLE CIRCUIT TOWER

345 kV THREE DOUBLE CIRCUIT TOWERS

A single 765-kilovolt (kV) transmission line can carry the same amount of electricity as six 345-kV transmission lines, for not much more right-of-way than existing 345-kV lines, maximizing the efficient use of land and reducing the overall impact on landowners.

Cooperative Light & Power
Your Touchstone Energy® Partner

HIGH SCHOOL SENIORS, COULD YOU USE \$1,000 FOR COLLEGE?

Cooperative Light & Power will be giving out a total of \$6,000 in scholarships to students within our service territory. Award amount is \$1,000, and will be awarded to two students enrolled in the Two Harbors High School and the William Kelley High School, and two students enrolled in a high school out of the area.

Scholarship guidelines and applications can be found on our website at www.clpower.com or from your guidance counselors at Two Harbors High School or William Kelley High School.

Who knew a penny could have such a **HUGE** impact?

Co-op Light & Power's Community Trust is now accepting Operation Round Up Grant Applications until February 14th.

Operation Round Up® provides grants to local not-for-profit organizations and community projects such as food shelves, volunteer fire departments and rural ambulance services. Co-op members voluntarily participate by “rounding up” their monthly electric bills to the nearest dollar.

The change is placed in a trust, which is then donated to local organizations, making real change in your community.

YOUR ORGANIZATION COULD BE NEXT

Visit www.clpower.com to download a grant application, or call CLP's offices at 218.834.2226 or 800.580.5881.

You will be amazed at what a penny can do!

Angel Food Cake Dessert From the Kitchen of: Mary Maleski

- 3 ½ oz Instant vanilla pudding
- 1 cup milk
- 1 pint heavy whipping cream
- 1 cup sour cream
- Strawberries (or any berries)
- Angel Food cake

Mix pudding, sour cream, and milk in a large bowl until thick and well mixed. Fold in whipping cream. Layer angel food cake, berries, and pudding mixture in a large serving bowl. Repeat the layers.

Submit your favorite recipe! If your recipe is printed in an issue of “Powerlines” you will receive a \$10 credit on your electric bill.

Read Your Board Meeting Summary

The regular meeting of the Board of Directors of Cooperative Light & Power (CLP) was called to order on November 27, 2024, at 9:03 a.m. at the CLP office. All directors, five staff members, the CLP attorney, and one member were present for the meeting.

The following actions were taken at the November 2024 Board Meeting:

- Approval of the modified Agenda
- Approval of the October 2024 Board Meeting Minutes
- Approval of the Consent Agenda
- Approval of the Financial Report
- Approval of donation to Rock Solid Robotics
- Approval of Capital Credit Retirement of Early Estates Resolution
- Approval of Capital Credits Resolution
- Approval of changes to Board Policy II-17, Delinquent Accounts
- Approval of new Board Policy II-23, Capital Credits
- Approval of changes to Board Policy, IV-21, Financial Management
- Approval of the 2025 Budget

The following reports were given:

- Finance Report
- Member Services/HR Report
 - o Holiday Open House
 - o 2025 Youth Tour

- Energy Services Report
 - o Load Control Meeting with Eaton
 - o DG/Community Solar update
 - o Heat services/Load Control update
 - o EV charger installation
 - o October rebates update
- Operations Report
 - o Trying to finish underground projects before freeze
 - o GRE switching training
 - o November outage report
- CEO Report
 - o MREA Annual Meeting & legislative update
 - o NRECA election recap
 - o Grant updates
 - o Various meeting updates
 - o MMG Meeting Report
- Directors Peterson, Weideman, Willemarck, and Jospheon reported on the NRECA Credentialed Cooperative Director (CCD) classes they attended.
- President Report
 - o GRE Meeting

Discussion was held on the Articles of Incorporation and Bylaw changes.

Closed Meeting to discuss confidential land purchase, GRE rate increases, and staffing updates. Member account number six hundred two thousand two hundred eighty four.

Adjournment was at 2:15 p.m.

Year-to-date Financials

	<u>Nov-24</u>	<u>2014</u>	<u>2023</u>	<u>2024</u>
Operating Revenue	\$ 10,905,144	\$ 13,181,663	\$ 13,759,473	
Cost of Purchased Power	\$ 6,759,377	\$ 6,688,913	\$ 7,081,420	
Other Operating Expenses	\$ 3,788,549	\$ 5,878,666	\$ 6,085,231	
Total Cost of Electric Service	\$ 10,547,926	\$ 12,567,579	\$ 13,166,651	
Operating Margin (Loss)	\$ 357,218	\$ 614,084	\$ 592,822	
Interest Income	\$ 98,974	\$ 110,637	\$ 68,272	
Other Margins	\$ (19,217)	\$ (54,193)	\$ (14,702)	
Capital Credits	\$ 50,347	\$ 29,859	\$ 41,707	
Total Margins	\$ 487,322	\$ 700,387	\$ 688,099	
kWh Purchased	99,807,762	92,301,748	88,615,050	
kWh Sold	94,146,598	88,075,743	84,772,901	
Line Loss	5.67%	4.58%	4.34%	
Members Billed	6,006	6,470	6,514	
Average kWh Used, Residential	1,103	996	937	
Average Bill, Residential	\$ 128.87	\$ 153.28	\$ 154.98	
Average Cost/kWh, Residential	\$ 0.1168	\$ 0.1539	\$ 0.1654	
Interest Expense	\$ 405,381	\$ 347,683	\$ 345,966	

Dates to Know...

- Feb 10:** Dist. #2 Nominating Mtg
- Feb 11:** Dist. #5 Nominating Mtg
- Feb 14:** Operation Round-Up Grant Applications Due
- Feb 14:** Youth Tour Applications Due
- Feb 17:** President's Day CLP CLOSED
- Feb 25:** CLP Bills Due
- Feb 26:** CLP Board Meeting

NOTE: CLP dates subject to change

To view a complete version of the latest CLP Board Meeting Minutes please go to:
<http://clpower.com/board-meeting-minutes>

TO REPORT AN OUTAGE:

Call CLP at 834.2226 or 800.580.5881 during business hours or 800.927.5550 after hours.

BEFORE calling, please check your breakers. If an outage is found to be on your side of the meter, you will be billed for a service call.

SPOT YOUR NUMBER:

A \$20 electric credit is awarded each month to our faithful readers. Four account numbers are spelled out in each newsletter. If you find yours, notify CLP by the 25th of that month and a credit will be applied to your bill.

Credits claimed for January:

Bradley or Kristine Udenberg

Credits not claimed: Jason Yonts, Joseph Harrison, and Loris Crimmins

OPERATION ROUND UP TOTALS:

December Donations: \$1,612.91

Year-to-date Donations: \$19,379.69

Thank you to all the participants! If you have questions about Operation Round Up, or would like to apply for a grant from the Fund, please contact CLP at 218.834.2226 or 800.580.5881, or visit our website at www.clpower.com.

Cooperative Light & Power is an equal opportunity provider and employer.