

PowerLines

Your Trusted Energy News Source



Your Touchstone Energy® Partner 

April 2023 • www.clpower.com



Linemen Appreciation Day is April 11th!

▼ District #1 Candidates, pg 1

▼ Co-op Member Benefit, pg 2

▼ Learn about the IRA, pg 3

▼ Board Minutes Summary, pg 4

CLP's Annual Meeting & District #1 Election Just Days Away

Don't forget to attend this year's CLP Annual Meeting. The dinner and meeting will be held at the Two Harbors High School on Wednesday, April 19th.

The evening will kick off at five o'clock with a free Sloppy Joe dinner served by the Lion's Club and dinner entertainment provided by the Two Harbors Ukulele Group (THUGS). After dinner and before the business meeting, enjoy electric safety demonstrations by the CLP linemen, family bingo with prizes in the auditorium, along with a coloring contest and a bike raffle for the kids.

The business meeting and election start at six o'clock.

We will have an open gym for the kids during the business meeting! A local high school team will supervise and provide a variety of games for the kids to enjoy.

For more information on the CLP Annual Meeting, please see the 2022 CLP Annual Report mailed last week.

Meet Your District #1 Director Candidates



Jessica Larsen

I have lived in Brimson for seven years, and most know me as the owner of Hugo's in Brimson.

Hello, my name is Jessica Larsen. I have

I grew up, went to school, and worked on the Iron Range, having used my psychology degree to work in the Human Service field for approximately 20 years.

I have been on various community boards and volunteer associations for

the past 20+ years.

I am excited to learn, support, and work together with Cooperative Light & Power and the members of the co-op to ensure safe, reliable, and affordable energy for the community.



Gene Wolfe

and graduated from William Kelley High School in 1972. I attended college at Saint Olaf College in Northfield, MN, graduating Magna Cum Laude with Inter-Department honors in History, Religion, and Theater. Upon graduation

I grew up in Silver Bay, MN and

I moved to Minneapolis and began my career in Financial Services. In 1988 I moved to Scottsdale, AZ to take a sales leadership position with IDS/American Express.

I moved back to the Arrowhead region of Minnesota in 2005 and established an independent financial advice practice as a Registered Investment Advisor.

I am seeking election in order to pursue a number

of initiatives that will hasten the transition from fossil fuels to renewable energy sources. The Inflation Reduction Act of 2022 has allocated over \$9 billion to be used by electric cooperatives. This is a once-in-a-lifetime opportunity to move away from polluting fossil fuels.

I also will work to have CLP incorporate "best practices" in the areas of Right of Way, grid reliability, and contracting.

Capital Credits - One of the Many Co-op Member Benefits

Many benefits come with being a co-op member, but perhaps the best benefit is capital credits.

What are capital credits, you ask? As a member of Cooperative Light & Power (CLP), you invest in the operation of your co-op. Unlike an investor-owned utility, CLP doesn't pay dividends or any other money to shareholders who don't purchase electricity from us. Member account number six hundred forty one thousand seven hundred eighty three. Therefore, any excess revenue (or margins) is allocated back to the members in the form of capital credits.

At the end of each year, CLP calculates its operating margin, which is the amount by which operating income exceeds operating expenses throughout the year.

CLP then allocates the excess margins as capital credits to each CLP member based on the amount of electricity purchased throughout the year. When the CLP Board of Directors determines it is financially feasible, capital credits are retired – or paid back to our members. Current CLP members that were members in 1995 will receive their payment in the form of a credit on their electric bill, and past members will receive their payment in the form of a check. Member account number six hundred thirty thousand one hundred seventy seven. Please note that due to the cost of issuing checks, CLP will hold retirement checks yearly until the payment amount reaches \$10

or more.

In the interim, CLP uses the allocated, but unretired, capital credits to improve and expand the electric system and meet other capital needs. This reduces the need to borrow money and helps provide reliable electric service to you.

A little over \$457,000 in capital credit payments were issued this month. The payments include CLP credits from 1995 and Great River Energy credits through 2004.

Nationally, electric cooperatives have retired \$19 billion to members since 1988 - \$1.5 billion in 2020 alone.

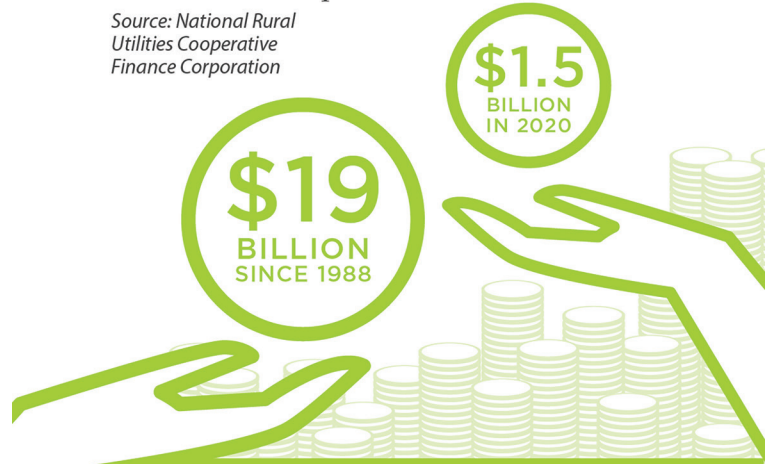
Capital credits are also another reason that it is essential to keep CLP informed of any address changes, even when you no longer receive electric service from us.

Did You Know?

Electric cooperatives have retired \$19 billion to members since 1988 - \$1.5 billion in 2020 alone.

Because electric co-ops operate at cost, any excess revenues (called margins) are allocated and retired to members in the form of capital credits.

*Source: National Rural
Utilities Cooperative
Finance Corporation*



Minnesota State Electric Inspector for
Lake County and Southern St. Louis County:
Justin Barfuss @ (218) 220-0825

Anytime a homeowner or electric contractor installs wiring or performs other electrical work, Minnesota law requires an electrical inspector to inspect the work properly. A rough-in inspection must be made before any wiring is covered. A final inspection is also required. For more information, visit dli.mn.gov and go to the Electrical home page.

Call Before You Dig

800.252.1166
it's the law!

Call 800.252.1166 to locate underground wires.

You must call at least 48-hours in advance before any excavations (this notice does not include weekends, holidays or emergencies).

CLP will only locate the underground wires that are owned by CLP, we do not locate or take responsibility for locating wires beyond the meter location.



PowerLines

April 2023 - Vol. 25, Issue 4
OFFICIAL PUBLICATION OF
Cooperative Light & Power
Association of Lake County
1554 Highway 2 • P. O. Box 69
Two Harbors, MN 55616
www.clpower.com

CLP Office: 218-834-2226 or 800-580-5881
Power Outage (24/7): 800-927-5550

Winter Business Hours:
Monday - Friday 7:30 a.m. - 4:00 p.m.

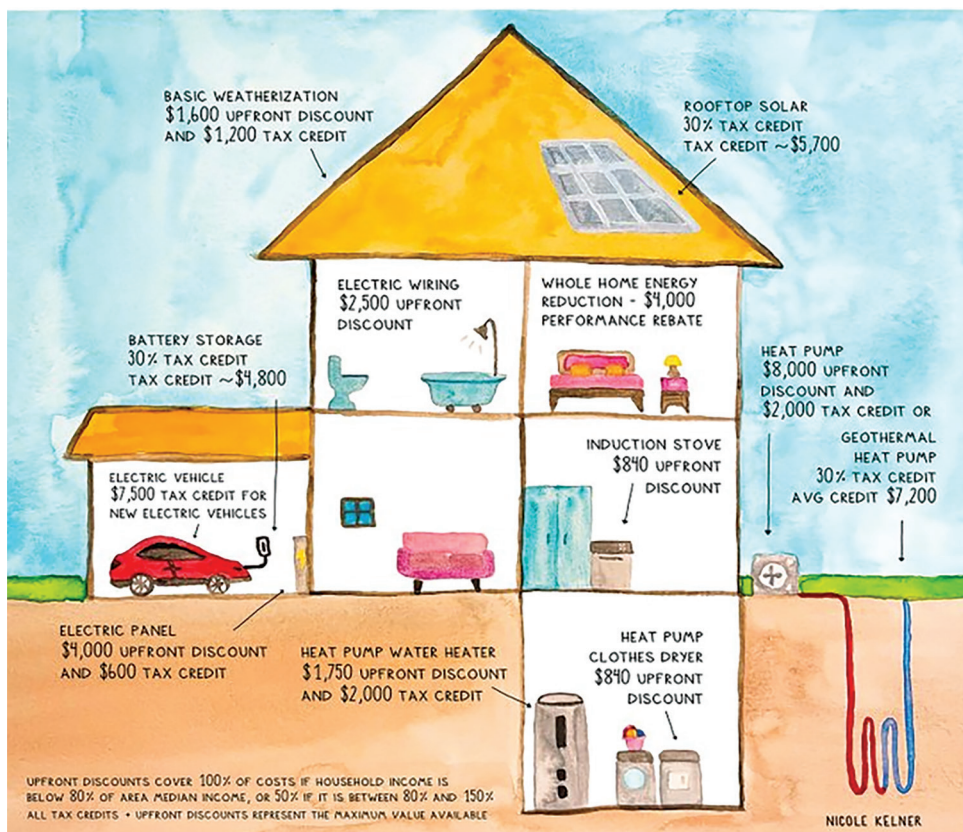
Board/CEO Contacts

Joel Janorschke, CEO
jjanorschke@clpower.com or (320) 292-4036
Scott Veitenheimer, President/Chair, District 2
sveit@clpower.com or (218) 340-8968
Pat Schmieder, Vice-President, District 1
patschmieder@clpower.com or (218) 834-2247
Kyle Weideman, Treasurer, District 3
kweideman@clpower.com or (218) 834-3476
Roger Peterson, Secretary, District 5
rpeterson@clpower.com or (218) 226-8197
Steve Josephson, Director, District 4
sjosephson@clpower.com (218) 226-4163

Inflation Reduction Act (IRA)

POTENTIAL SAVINGS FROM THE IRA

BASED OFF A 2 PERSON HOME WITH A COMBINED INCOME OF \$150,000 IN NEW YORK CITY



If you're looking to improve your home's energy efficiencies, upgrade appliances, or even purchase an electric vehicle, now may be the time due to a \$370 billion Federal Inflation Reduction Act (IRA) signed last fall. Member account number six hundred ninety thousand three hundred fifteen.

In addition to solid tax credits, there are other initiatives that offer thousands

of dollars in hefty rebates and some incentives that cover up to 100% of the cost of purchasing and installing clean energy improvements. The federal program is also directed partially through state guidelines. The Minnesota Department of Commerce (MN DOC) anticipates receiving guidance to develop how the programs can work in Minnesota later this year.

No Bake Energy Bites

From the Kitchen of: Susie Haugen

- | | |
|---|------------------------------|
| 2 cups old- fashioned oats | 1/2 cup honey |
| 1/2 cup ground or milled flaxseed | 1 tsp vanilla |
| 1 cup of peanut butter or almond butter | 1/2 cup dark chocolate chips |

Mix all ingredients together except for the chocolate chips. Once mixture is well combined stir in chocolate chips. Press firmly into 8x8 baking dish. Store in the refrigerator.

Submit your favorite recipe! If your recipe is printed in an issue of "Powerlines" you will receive a \$10 credit on your electric bill.

Because the programs are new, we have captured some links to help navigate how you may be able to benefit from the IRA. Visit our website at clpower.com.

ROW Clearing

Cooperative Light and Power (CLP) performs Right-of-Way (ROW) maintenance (clearing the power line ROW of under-growth and hazardous trees) as it is a necessary process to keep line workers and the general public safe and to deliver reliable electricity. A common cause of power interruptions is trees brushing against and falling on the power lines. ROW maintenance helps keep your blinks to a minimum, reduces outage frequency, duration, and fire hazards, and increases reliability.

CLP has contracted with Central Applicators to perform mechanical brushing on the CLP Right-of-Way. Work began in mid-March and will continue for the next couple of weeks. Member account number six hundred fifteen thousand twenty nine. They will work from Highway 6 to Highway 1 along Highway 61, clearing the main line and taps off the main line. Additional clean-up will be done once the snow is gone and the ground has dried up.

You will receive a call from CLP if the work being done is on your property. If you have any questions or concerns, please contact us at 218.834.2226.

CLP SUMMER HOURS

May 1st - September 29th

Monday: 7:00 AM - 4:30 PM

Tuesday: 7:00 AM - 4:30 PM

Wednesday: 7:00 AM - 4:30 PM

Thursday: 7:00 AM - 4:30 PM

Friday: 7:00 AM - 11:00 AM

Read Your Board Meeting Summary

A regular meeting of the CLP Board of Directors was on January 25, 2023.

Meeting called to order at 9:03 a.m.

Motions were made, seconded and passed to approve the agenda, minutes, consent agenda, and financials.

A motion was made and seconded to go into executive session to discuss employee review with Debra Englund from HRExpertiseBP. A motion was made, seconded and passed to exit the session.

Business Manager Olson presented a slide overview on the Davey Resource Group (DRG) Integrated Vegetation Management (IVM) project and discussed Energy Audits.

Marketing Manager Hogenson discussed the upcoming Annual Meeting and nominating meeting. Attorney Felstul went over the nominating process with the Board. A motion was made, seconded and passed to appoint Janet Keough of district one as chairman of the nominating committee. Carey presented the Emergency Response Plan (ERP).

CEO Janorschke gave his report to the Board. The Class Cost of Service Study (CCOSS) is underway. MREA updates include many turnovers. Legislation filed to be 100% carbon free by 2040. Another item on legislation is Diversity reporting. CEO Janorschke and Director Veiten-

heimer reported on the GRE January's Board and MMG meeting.

Operation Manager Bentler updated the board on discussions he has had with dealerships regarding EV chargers. He also spoke on a transformer malfunction.

A motion was made and seconded for approval and acceptance of Offer to Amend Power Purchase Contract. Resolution passed.

A motion was made, seconded and passed to approve the 2023 Budget. The Board discussed by-law changes. This will wait until 2024.

Motions were made, seconded and passed to update Board Policy II-4 Meter Reading & Payment of Electric Energy Bills, Board Policy II-12 Connection Service Charge, Board Policy IV-12 Award of Contracts, Board Policy IV-14 Depository, and Board Policy IV-16 Insurance General.

Motions were made, seconded and passed to approve the special meeting minutes of January 5th & January 19th..

Next Board meeting date is February 23, 2023, at 9:00 a.m. Adjournment was called at 3:10 p.m.

To view a complete version of the latest CLP Board Meeting Minutes please go to:

<http://clpower.com/board-meeting-minutes>

Dates to Know...

- Apr 7:** Good Friday
CLP CLOSED
- Apr 9:** Easter Sunday
- Apr 11:** Linemen Appreciation Day
- Apr 14:** Cookies in CLP Lobby
- Apr 18:** Tax Day
- Apr 19:** CLP Annual Meeting
- Apr 25:** CLP Bills Due

NOTE: CLP dates subject to change

CLP Mission:

CLP delivers safe, reliable, affordable energy and services to our members while enhancing the vitality of our community

CLP Vision:

We aspire to be the force that empowers opportunities for the benefit of our members and community

TO REPORT AN OUTAGE:

Call CLP at 834.2226 or 800.580.5881 during business hours or 800.927.5550 after hours.

BEFORE calling, please check your breakers. If an outage is found to be on your side of the meter, you will be billed for a service call.

SPOT YOUR NUMBER:

A \$20 electric credit is awarded each month to our faithful readers. Four account numbers are spelled out in each newsletter. If you find yours, notify CLP by the 25th of that month and a credit will be applied to your bill.

Credits claimed for February:

No credits claimed for February.

Credits not claimed: Mark Broin, Roger Fjeran, Tim or Cindy Carlson, & John Holt

OPERATION ROUND UP TOTALS:

February Donations: \$1,758.13

Year-to-date Donations: \$3,529.80

Thank you to all the participants! If you have questions about Operation Round Up, or would like to apply for a grant from the Fund, please contact CLP at 218.834.2226 or 800.580.5881, or visit our website at www.clpower.com.

Cooperative Light & Power is an equal opportunity provider and employer.

Year-to-date Financials

| <u>Jan-23</u> | <u>2013</u> | <u>2022</u> | <u>2023</u> |
|--------------------------------|--------------|--------------|--------------|
| Operating Revenue | \$ 1,136,074 | \$ 1,560,521 | \$ 1,567,095 |
| Cost of Purchased Power | \$ 800,005 | \$ 782,122 | \$ 730,479 |
| Other Operating Expenses | \$ 316,589 | \$ 476,460 | \$ 540,993 |
| Total Cost of Electric Service | \$ 1,116,594 | \$ 1,258,582 | \$ 1,271,472 |
| Operating Margin (Loss) | \$ 19,480 | \$ 301,939 | \$ 295,623 |
| Interest Income | \$ 5,219 | \$ 3,327 | \$ 2,622 |
| Other Margins | \$ (15,762) | \$ (40,695) | \$ (640) |
| Capital Credits | \$ - | \$ - | \$ - |
| Total Margins | \$ 8,937 | \$ 264,571 | \$ 297,605 |
| kWh Purchased | 11,907,711 | 13,911,506 | 12,095,156 |
| kWh Sold | 11,301,657 | 13,269,632 | 11,816,864 |
| Line Loss | 5.09% | 4.61% | 2.30% |
| Members Billed | 5,922 | 6,366 | 6,436 |
| Average kWh Used, Residential | 1,730 | 1,933 | 1,660 |
| Average Bill, Residential | \$ 164.34 | \$ 211.86 | \$ 205.84 |
| Average Cost/kWh, Residential | \$ 0.0950 | \$ 0.1096 | \$ 0.1240 |
| Interest Expense | \$ 35,782 | \$ 30,607 | \$ 29,499 |