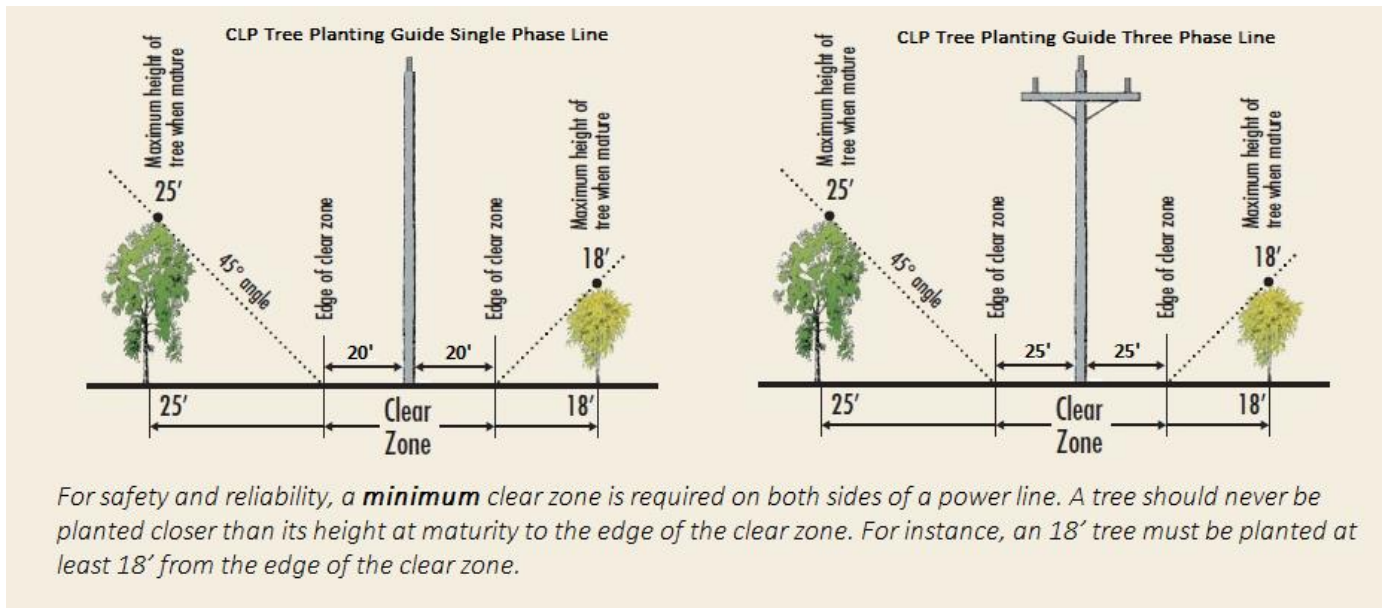


CLP Tree Planting Guidelines Quick Reference Guide

Where to Plant

The right tree planted in the right location provides environmental, economic, and aesthetic benefits for the property owner and the community. To maintain the beauty of your landscaping, public safety, and reliability of electric service, it's important to ensure that any tree planting does not interfere with any overhead or underground utility lines.



For safety and reliability, a **minimum** clear zone is required on both sides of a power line. A tree should never be planted closer than its height at maturity to the edge of the clear zone. For instance, an 18' tree must be planted at least 18' from the edge of the clear zone.

For planting, to ensure that a planted tree will not be cut, a minimum 25-foot clear zone (No Tree Zone) is required on both sides of the utility pole (50 feet total width) to accommodate CLP's widest ROW as shown in the illustration above. Outside of the minimum clear zone, the tree height and width at maturity must be considered before digging the planting hole to ensure the tree will not grow into the power line right of way. For more information refer to the Cooperative Light and Power Association's Vegetation

Management Program.

Call Before You Dig state and federal laws require marking of all underground utilities before any excavation. Regardless of where you are planting, call Gopher State One Call to request a locate several days before digging. Call **811** or **1-800-252-1166**. Facility marks are valid for 14 calendar days.